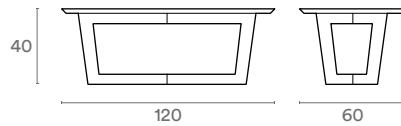


# Feng Shui



IMPERIAL LINE

top: legno, fenix, hpl  
 struttura: metallo  
 top: wood, fenix, hpl  
 structure: metal  
 plateau: bois, fenix, hpl  
 pieds: métal  
 encimera: madera, fenix, hpl  
 patas: metal



misure / dimensions / dimensions / medida



120x60  
 top: A,B, D, E, F



140x80  
 top: A, D, E, F



Ø 120  
 top: A, D, E, F



120x120  
 top: A, B, F



120x60  
 top: D



top / top / plateau / encimera



A 25 mm  
 legno / wood /  
 bois / madera



B 25 mm  
 legno / wood /  
 bois / madera



D 10 mm  
 fenix, hpl



E 10 mm  
 fenix, hpl



F 10 mm  
 fenix, hpl



basamenti / base / base / base



versione 1 / version 1 / version 1 / versión 1



versione 2 / version 2 / version 2 / versión 2

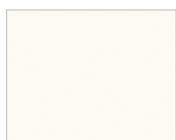


# Fenix Ntm<sup>®</sup>

fenix / fenix / fenix / fenix



IMPERIAL LINE



bianco malè



beige arizona



castoro ottawa



grigio Londra



grigio bromo



nero ingo



blu fes



rosso jaipur



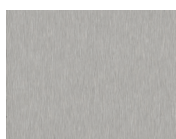
cacao orinoco



verde comodoro

# Fenix Nta<sup>®</sup>

fenix / fenix / fenix / fenix



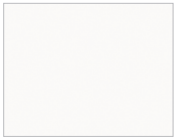
acciaio hamilton

# Metallo

metallo / metal / métal / metal



IMPERIAL LINE



bianco opaco  
matt white  
blanc mat  
blanco mate



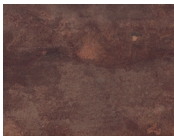
nero opaco  
matt black  
noir mat  
negro opaco

# HPL

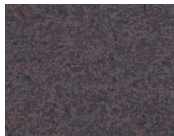
hpl / hpl / hpl / hpl

# Laminam

laminam / laminam / laminam / laminam



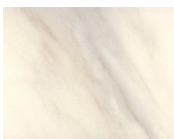
cor-ten  
cor-ten  
cor-ten  
cor-ten



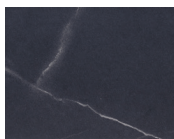
dark tribeka  
dark tribeka  
dark tribeka  
dark tribeka



noir desir  
noir desir  
noir desir  
noir desir



marmo bianco  
white marble  
marbre blanc  
mármol blanco



marmo nero  
black marble  
marbre noir  
mármol negro

# Legno

legno / wood / bois / madera

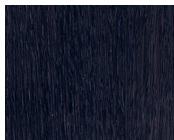


IMPERIAL LINE

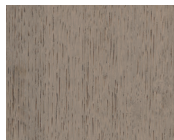
## rovere / oak / chêne / roble



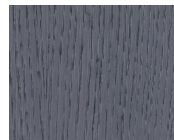
**bianco**  
white  
blanc  
blanco



**caffè**  
coffee  
café  
café



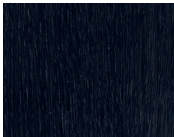
**cenere**  
ash grey  
cendre  
ceniza



**fumo**  
smoked grey  
fumée  
humo



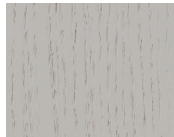
**naturale**  
natural  
naturel  
natural



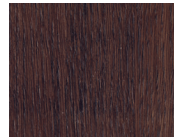
**carbone**  
coal black  
charbon  
carbon



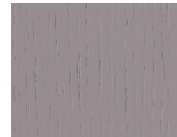
**neve**  
snow  
neige  
nieve



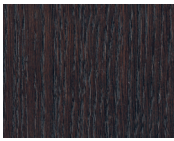
**polvere**  
dust  
poussière  
polvo



**tabacco**  
tobacco  
tabac  
tabaco



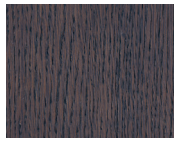
**titanio**  
titanium  
titane  
titanio



**wengé**  
wenge  
wengé  
wengue



**biscotto**  
biscuit  
biscuit  
galleta



**ardesia**  
slate grey  
ardoise  
pizarra



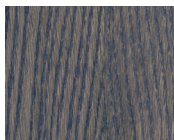
**so wood**  
so wood  
so wood  
so wood



**terra**  
terra  
terra  
terra



**chalet**  
chalet  
chalet  
chalet

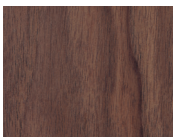


**grigio luna**  
moon grey  
gris lune  
gris luna



**fango**  
fango  
fango  
fango

## noce / walnut / noyer / nogal



**noce ossido**  
oxide walnut  
noyer oxydé  
nogal oxido

## zebrano / zebrano / zébrano / zebrano



**zebrano**  
zebrano  
zébrano  
zebrano